

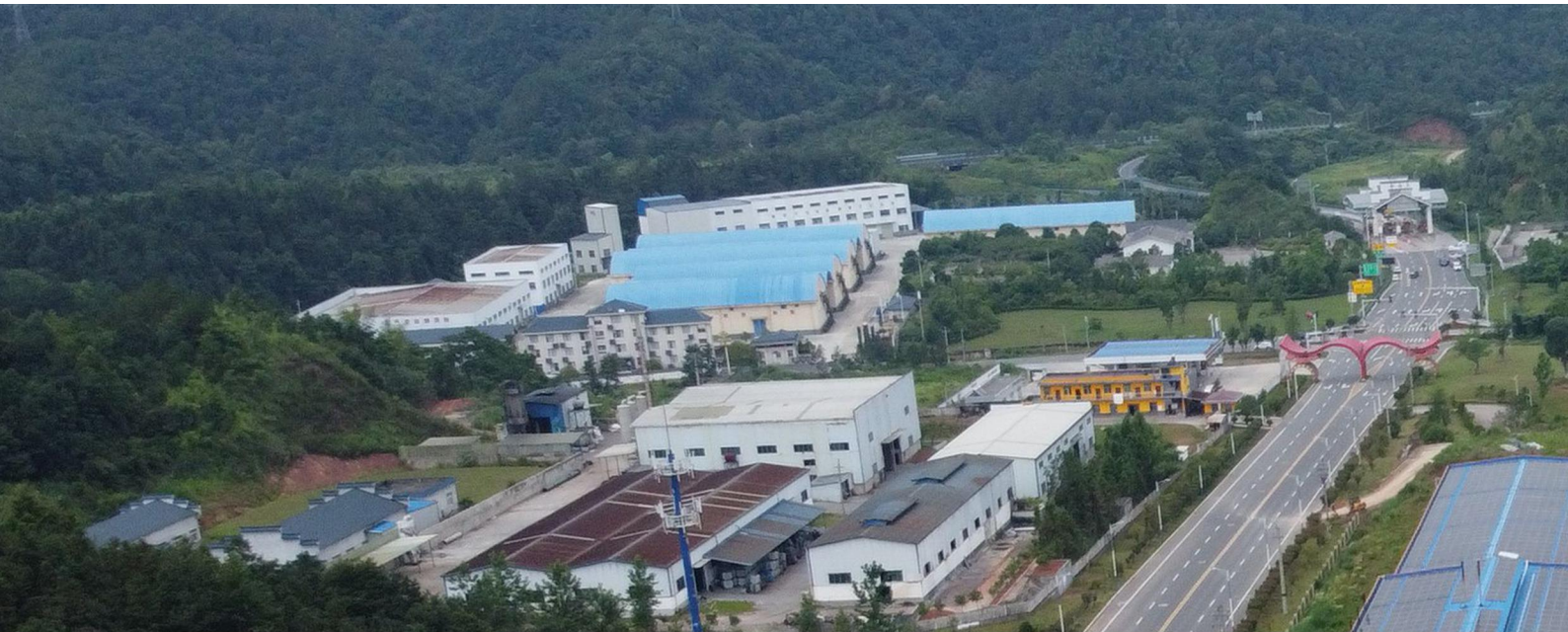
HOACE

山东禾赛智能装备有限公司

SHANDONG HOACE INTELLIGENT EQUIPMENGT CO., LTD.

To ensure widespread recognition of HOACE.

www.hoace.com



ABOUT HAOCE

Shandong HOACE Intelligent Equipment Co.,Ltd. (Short For: HOACE Intelligent).

At HOACE Intelligent, we offer a comprehensive range of cutting-edge products, including fiber laser marking machines, UV laser marking machines, CO2 laser marking machines, mold repairing laser welding machines, jewelry laser welding machines, and automatic laser welding machines, among others.

HOACE Intelligent stands out for its customer-centric approach. We provide customized samples to match your specific requirements, along with comprehensive installation, testing, and professional training services.

Our goal is to establish long-term partnerships with our valued customers, providing unwavering support and solutions for your evolving requirements. Experience the cutting edge of laser technology with HOACE Intelligent.





CORPORATE CULTURE



Mission

To establish ourselves as a trustworthy enterprise.



Vision

To ensure widespread recognition of HOACE.



VALUES

Uphold integrity and a spirit of progress.

Place utmost importance on customer satisfaction.

Embrace benevolence as our guiding principle.

Contribute meaningfully to society.

[illegible]

F D A



CREDIT EVALUATION



ABOUT VALUES THAT GUIDE US

It's the culture at HOACE that defines who we are. We're a team that challenges each other, we're passionate about customer satisfaction, and we always strive for better.

Our greatest asset at HOACE is our team. The people that strive every day to help our customers work better is why we are the global leader in Marking Machine. At HOACE, You will find a collaborative, fun, customer-focused, and high-energy environment where we challenge the norm.

We're looking for team members who have the drive to succeed, The desire to learn and grow and the determination to help our customers use Marking Machine Better.

6,900+

Orders

50%

After-sales team

6h

Response time

102

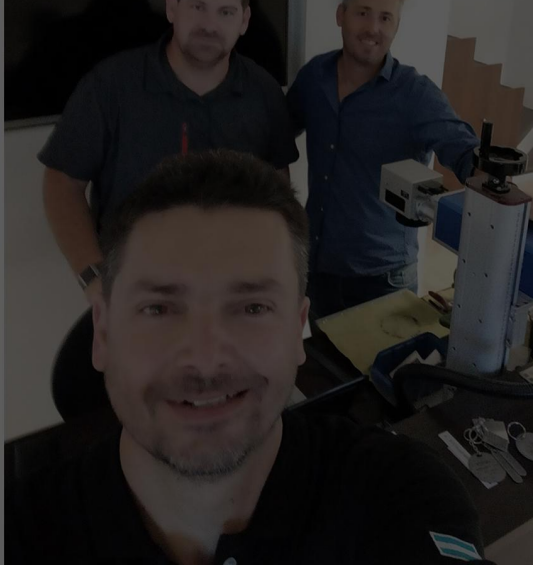
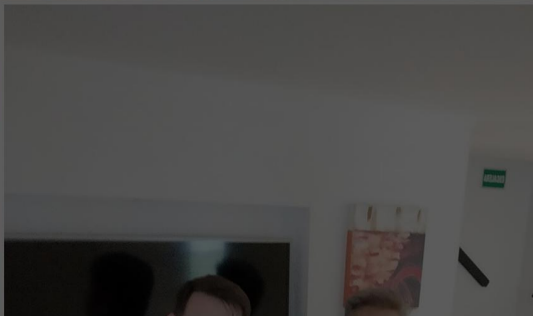
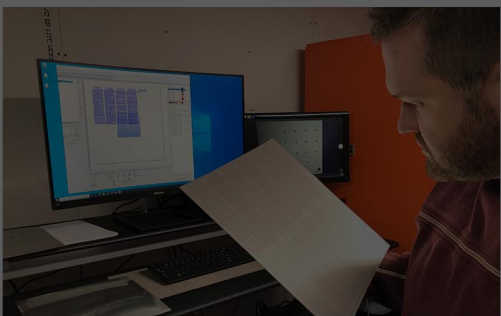
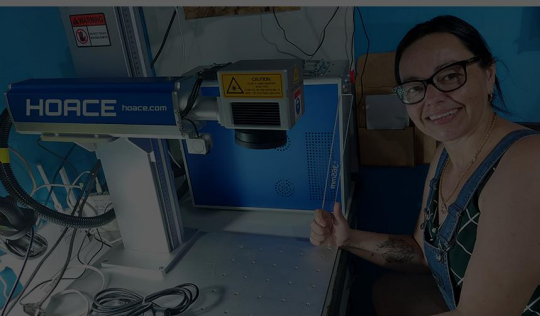
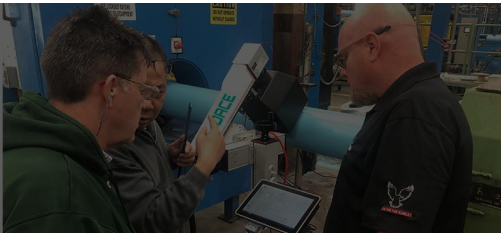
Countries

Our culture and vibe

Hoace Intelligent is a place where passionate people can do their very best work. We also have the space we need to let our creativity and talent run wild.

We celebrate our differences and recognize the individuality of every member of our team.





HF SERIES Fiber Laser Marking Machine



PACKING LIST

U Disk

Quantity x 1



Power Cable

Quantity x 1



Color Aluminum Sheet

Quantity *10



Protective Glasses

Quantity *1



Allen Wrench

Quantity x 1



Positioning Bar

Quantity 2*4



Foot Pedal Switch

Quantity *1



USB Data Line

Quantity *1



Product Description

Laser power : 20w/30w/50w/60w/80w/100w(optional)

Laser source : JPT, MAX, IPG ,RAYCUS (optional)

Lens,Marking area: 70*70mm, 110*110mm, 150*150mm, 175*175mm, 220*220mm, 300*300mm (Contact us for larger area engraving, we have large format machines)

Applicable Industry:

Workshop, Hardware industry, Gift Shop, Print Shop, 3C Digital, Souvenir Shop, Jewelry Store, Pet Store, Medical Use, Small Business, Esty Seller, Munitioner, Education, Office, DIY, Kickstarter Entrepreneur.

Application Cases:

Engraving on jewelry, guns, firearms, blades, axes, knives, coins, stamps, forks, spoons, cutlery, flasks, wallets, tumblers, mugs, cups, dog tags, slate coasters, etc.

YOU CAN ENGRAVE ON THESE MATERIALS



Machine Specification

Name	HF Laser Marking Machine			
Laser Power	20 Watt	30 Watt	50 Watt	100 Watt
Laser type	Max / Raycus / JPT / IPG Laser Source			
Wavelength	1060-1085 nm			
Marking Speedy	≤ 7000mm/s	≤ 7000mm/s	≤ 7000mm/s	≤ 7000mm/s
Laser Frequency (kHz)	20-100KHZ	20-100KHZ	1-4000KHZ	1-4000KHZ
Pulse Width	120-150ns	120-150ns	2-500ns	2-500ns
Pulse Energy	1 mJ	1 mJ	1.5 mJ	1.5 mJ
Marking deep	0.1-0.5mm	0.1-0.5mm	0.1-2mm	0.1-2mm
Power consumption	500W	500W	600W	800W
Marking area	70*70mm / 110*110mm / 150*150mm 175*175mm / 200*200mm / 300*300mm			
Cooling System	Air Cooling			
Optional Rotary Fixture	50mm, 69mm, 80mm, 100mm, 120mm, 160mm, 200mm, 220mm etc.			
More optional Parts:	Conveyor table / Vacuum system / Electric XY table.			
Electrical Requirements	110V-240V/50Hz-60Hz(According to local electricity supply).			

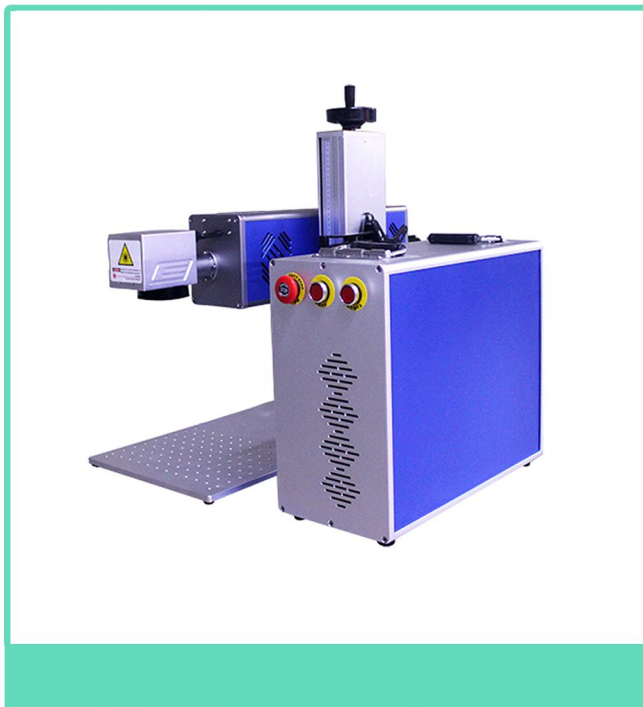
HC SERIES CO2 Laser Marking Machine



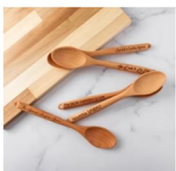
Desktop Co2 Laser Marking Machine



Online Flying CO2 Laser Marking Machine



Application



Description

Fitted with full set of imported metal sealed radiation frequency Co2 laser, and equipped with high speed scanning galvanometer and extending focusing system. The machine also has high stability and an anti-intervention industrial computer system as well as high precise lifting platform. It can work on a continuous 24 working hours in high stability, high precision, and high speed.

Can customize text and patterns on various bamboo and wood products such as bamboo bowls, bamboo chopsticks, wooden boards, bamboo spoons, pen holders, combs, etc.

Feature:

1. Air-cooling for small power unit
2. Stable laser output and high quality beam
3. Maintenance free, long service life and low running cost
4. Compatible marking software communication to CorelDraw, AutoCAD, Photoshop, such as PLT, DXF, BMP, PCX, JPG and normal sector graph and spot graph: Compatible to mark date, serial No., barcode, ASCII 2 code, auto-coding, auto number-skipping etc.

Machine Specification

Laser Power	20 Watt	30 Watt	50 Watt
Laser type	BOST/DAVI		
Marking area	70*70mm/ 110×110mm / 150*150mm 175×175mm /330mm*330mm		
Repetition Rate	1-20KHZ		
Marking Speed	≤7m/s(275.6in/s)		
Engraving Depth	≤0.4mm(0.016in)		
Minimum Line Width	0.1mm(0.004in) Depends on material		
Minimum Character	0.2mm(0.008in) Depends on material		
Marking Interface	USB connection. Compatible with Windows XP/Vista/7/8/10.		
Electrical Requirements	110V-240V/50Hz-60Hz(According to local electricity supply).		
Communication Mode For Automation	TCP/IP,IO,RS232.		
Red Dot Pointer	Since the laser beam is invisible,the Red Dot Pointer allows you to have a visual reference for locating where the laser will fire.		
Power consumption	800W		

HU SERIES Ultraviolet Laser Marking Machine



Desktop UV Laser Marking Machine

YOU CAN ENGRAVE THESE MATERIALS

Glass Wood Paper Rubber Leather
Building Ceramics PVC Acrylic Bamboo Products

Machine Specification

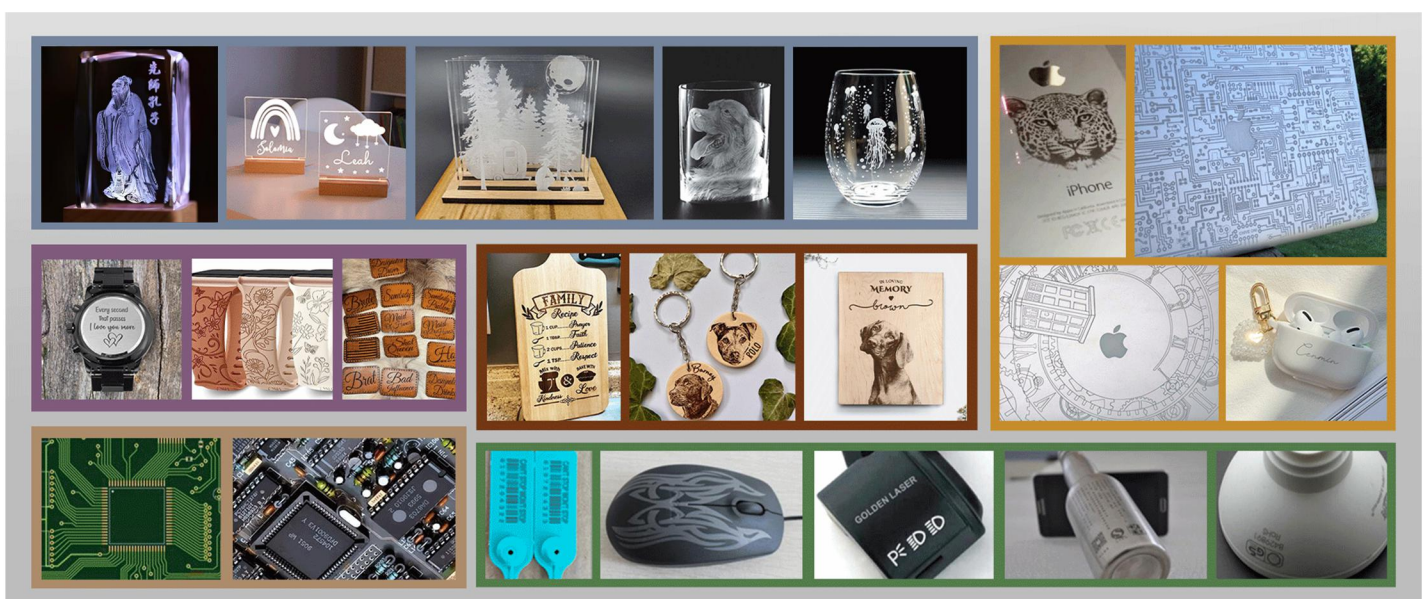
Laser Power	3 Watt	5 Watt	10 Watt
Laser type	JPT SEAL355-3/5/10S/15S		
Max Marking Range	200*200mm	300*300mm	300*300mm
Graphic Format Supported	AI, PLT, DXF, BMP, DST, DWG, DXP		
Repetition Frequency	20-100 KHZ		
Working Accuracy	±0.002MM		
Marking Speed	1-12000mm/s		
Laser Wavelength	10640nm		
Minimum Font for Marking	0.15mm		
Marking Interface	USB connection. Compatible with Windows XP/Vista/7/8/10.		
Working Voltage	220V+10% 50/60 Hz		
Optional Accessories to Purchase	D80 Rotating Shaft/ D57 Small Chuck/2D Table (X.Y direction)/ Cutting		
Spare Parts Come with the Machine	Protective glasses, Metal business card, Foot switch, Hex socket wrench,		
Wooden Packing size	440*320*510mm (L*W*H)		
Gross weight	55KG/78KG		
Power consumption	800W		

Application

UV laser is very different from CO2 laser and fiber laser. UV laser is also known as a blue laser beam, which can be engraved with low heat. The light wave or ultraviolet spectrum of the UV laser marking machine is one of the main reasons that this technology can be engraved on different materials. It does not heat the surface of the material like fiber laser and CO2 laser marking machines.

Unique Low-Power Laser Beam and Smaller Focusing Spot, No Thermal Effect, Prevent Material Deformation, Damage or Scorching.

1. Packaging Inkjet Coding, such as Cosmetics, Medicines, Food, and other Macro-molecule material packaging surface;
2. 3C Industry, Mobile phones, Keyboards, Chargers etc
3. Industry Processing: Electronic Components, such as Chips, Circuit Board, etc; LED Lineation and Silicon Processing
4. Electrical appliance housing marking
5. Metal or Non-metal Coating Removal
6. Scribing and blind groove processing of various materials
7. New ultra-thin metal foil micro-hole production
8. Glass products marking and engraving etc.
9. Engraving and marking of all plastics
10. Paper marking; Leather marking and graving; Wood Marking; Garment marking; Ceramic marking



HM Series Split MOPA Fiber Laser Marking Machine



Split MOPA Fiber Laser Marking Machine

Description

MOPA fiber laser marking machines are top sale now. They are high flexibility because of wider range of pulse 2ns to 500ns ,Frequency 1khz to 4000khz. So that mopa laser has extral engraving advantages:

- * Long Lifespan, Free Maintenance and Low Cost.
- * Compatible with Multiple File Formats: Coredraw, AutoCAD, Photoshop; PLT, PCX, DXF, BMP, etc Supported. Directly use TTF Fonts.
- * Automatic Encoding, Printing Serial Number, Batch Number, Date, Barcode, QR Code, Automatic Jump Number, etc Supported.
- * Double Red Dot Focusing: Red Guideline and Red Dot for Easy Focusing.
- * Red Dot Pointer: Since the laser beam is invisible, the red dot pointer allows you to have a visual reference for locating where the laser will fire.
- * High Quality Machine Parts: JPT MOPA M7 Laser Source, Jollystar & Opex F-Thea Len, JCZ-LMCV4 Control Board, Sino-Galvo Scanner.
- * Easy Operation, English User Manual, VCD Training Video, Software Sending Together with the Machine. ISO, CE & FDA Certificate.

Machine Specification

Laser Power	20 Watt	30 Watt	50 Watt	100 Watt
Laser type	Max / Raycus / JPT / IPG Laser Source			
Wavelength	1060-1085 nm			
Marking Speedy	≤ 7000mm/s	≤ 7000mm/s	≤ 7000mm/s	≤ 7000mm/s
Laser Frequency (kHz)	20-100KHZ	20-100KHZ	1-4000KHZ	1-4000KHZ
Pulse Width	120-150ns	120-150ns	2-500ns	2-500ns
Pulse Energy	1 mJ	1 mJ	1.5 mJ	1.5 mJ
Marking deep	0.1-0.5mm	0.1-0.5mm	0.1-2mm	0.1-2mm
Power consumption	500W	500W	600W	800W
Marking area	70*70mm / 110*110mm / 150*150mm 175*175mm / 200*200mm / 300*300mm			
Cooling System	Air Cooling			
Wooden Packing size	85*55*45 cm / (L*W*H)			
Optional Rotary Fixture	50mm, 69mm, 80mm, 100mm, 120mm, 160mm, 200mm, 220mm etc.			
More optional Parts:	Conveyor table / Vacuum system / Electric XY table.			
Electrical Requirements	110V-240V/50Hz-60Hz(According to local electricity supply).			

YOU CAN ENGRAVE ON THESE MATERIALS



Aluminum



Gold



Silver



Stainless Steel



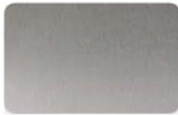
Copper



Platinum



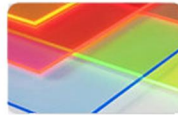
Tile



Tungsten



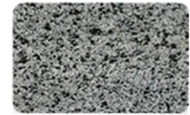
Carbon Steel



Silicon Plastic



Stone



Granite



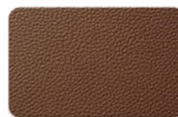
Brass



Titanium



Colored Acrylic



Leather

Aluminum

Gold

Silver

Stainless Steel

Brass

Titanium

Tungsten

Copper

Platinum

Carbide

Nickel

Carbon steel

Iron

Chrome

Silicon Plastic

Colored Acrylic

Hard Plastics

Brick

Granite

Marble

Tile

ABS

PVC

Ceramic

Stone

PLA Plastic

PBT Plastic

* Some PVC-based acrylics can create toxic fumes when lasered.

Contact us with questions on specific materials not listed above, we can offer to process a sample test for confirmation.

This is

Hoace



T:+86 531 858 99920

E:info@hoace.com

W:www.hoace.com

Add:1-2621 CSCEC Jinxiu Plaza Phase II,Huaiyin District, Jinan,China